

FURUNO

NAVnet

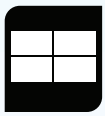
TZ
touch **E**

Compact & Powerful Multi Function Displays



Model TZT9E / Model TZT13E





Scalable Integration with Serious Capability

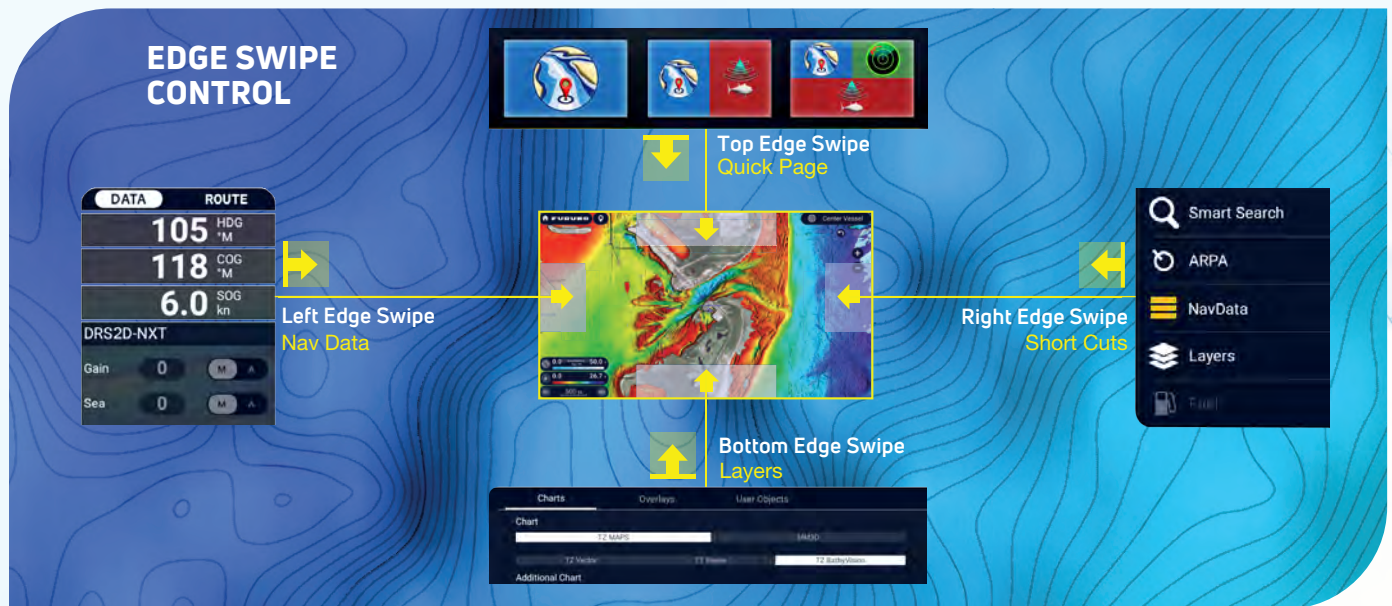
Furuno expands NavNet TZtouchXL with the TZtouchE Series, two fully networkable MFDs that deliver serious performance and system scalability to vessels of any size. Whether you're building a full-featured helm or expanding your TZtouchXL network, these powerful 9 and 13-inch multi touch TFT displays deliver advanced charting, Radar, and Fish Finder integration powered by the intuitive TZtouchXL user interface.

The TZT9E and TZT13E go beyond stand-alone navigation, delivering exactly what you need and nothing that slows you down. With full Radar compatibility, CSH10 Omni Sonar interface, and seamless integration with cameras, and other sensors, these multi touch MFDs put the most essential features at your fingertips in a streamlined, powerful package.



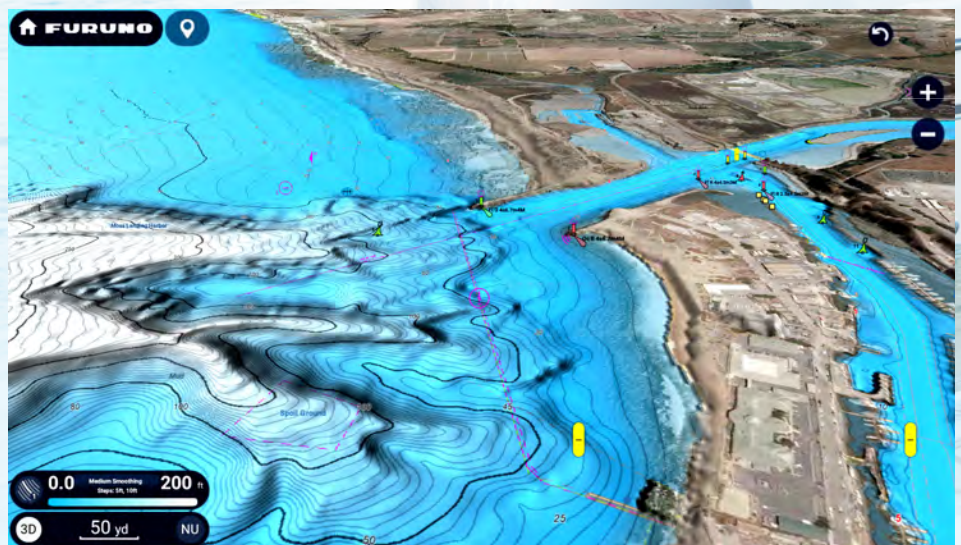
Touchscreen Power Meets Network Performance

The 9" TZT9E and 13" TZT13E feature vibrant, all-glass multi touch TFT displays with responsive edge swipe control. These displays are powered by a streamlined version of Furuno's TZtouchXL operating system, making them quick, smooth, and familiar for existing TZtouch users. With access to essential features and full network integration, you can connect your entire vessel through one unified interface.



TZ MAPS: Advanced Charting, Custom Build

With built-in TZ MAPS, you'll unlock unprecedented chart clarity and customization. Toggle BathyVision™ bathymetric layers, change and adjust color themes, and explore high-resolution chart content built from official hydrographic data, satellite imagery, and crowd-sourced details—all displayed instantly and beautifully.



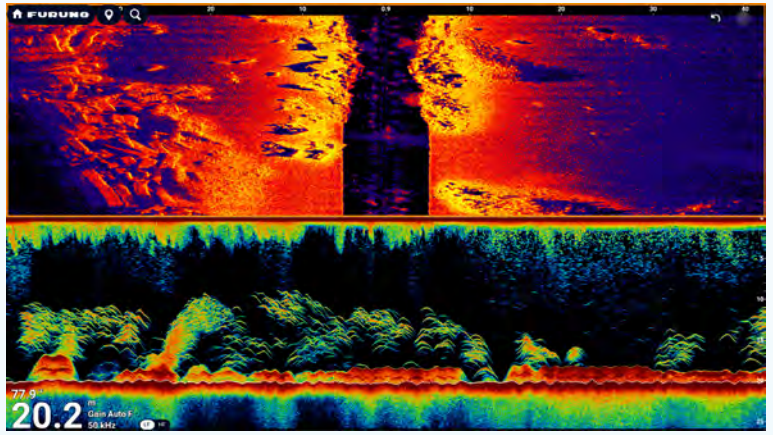
Detailed, customizable TZ MAPS with color themes, terrain shading, and user-sourced data





Fish Finder Ready, and Then Some

A built-in single-channel TruEcho CHIRP™ or CW Fish Finder, and 230kHz or 455kHz CHIRP Side-Scan are just the beginning. The TZT9E and TZT13E also support Furuno's most powerful Sonar options, including the DFF3D Multibeam Sonar, CSH10 Searchlight Sonar, and the full DFF series. Whether you're vertical jigging, structure fishing, or deep dropping, you have the tools to find and follow the fish.

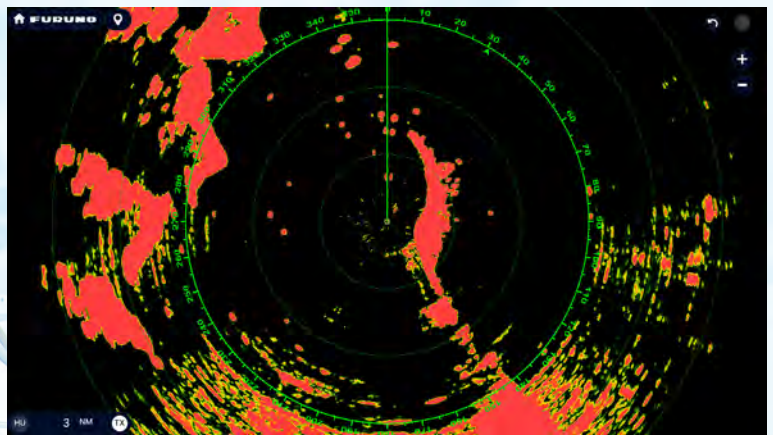


Internal TruEcho CHIRP™ Fish Finder and compatibility with the DFF3D, CSH10, and DFF series Black Box Fish Finders



Radar Integration Without Limits

TZT9E and TZT13E are compatible with NXT and X-Class DRS Radars. Whether you're navigating through fog, tracking traffic, or monitoring squalls, these MFDs bring unmatched situational awareness to your helm.

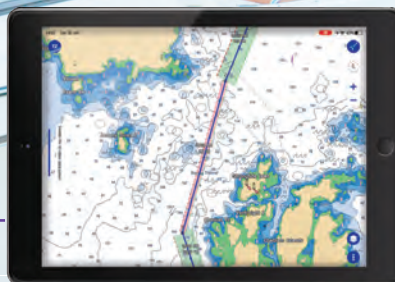


Network with DRS Radar

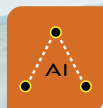


Connected from Anywhere Onboard

Use the TZ iBoat App on your phone or tablet in conjunction with the TZTE Series to gain access to detailed TZ MAPS charts, tides, routes, Dynamic Mooring, weather, and fishing data.



Monitor and control your vessel from your smartphone or tablet with the TZ iBoat App



AI Tools for Safer Navigation

Built-in AI Routing* automatically calculates the safest, most efficient course, accounting for known hazards and shallow depths. The TZT9E and TZT13E also unlock powerful tools like AI Avoidance Route and Risk Visualizer, providing enhanced guidance in complex or high-traffic areas.

* AI Routing requires current subscription to TZ MAPS in your area



Smart guidance tools like Risk Visualizer and AI Avoidance Route keep you safe and informed

DISPLAY

Type	T2T9E: Color TFT Multi Touch T2T13E: Color TFT Multi Touch
Screen Size	T2T9E: 9" Wide T2T13E: 12.8" Wide
Screen Resolution	T2T9E: HD 1280 x 720 T2T13E: FHD 1920 x 1080
Screen Brightness	1000 cd/m ² (typical)
Language	Bulgarian, Chinese (Simplified/Traditional), Danish, English (US/UK), Finnish, French, German, Greek, Italian, Japanese, Norwegian, Portuguese, Russian, Spanish, Swedish, Turkish, Polish

GNSS/WAAS

Receive Type	GNSS
WAAS	72 channels
Receiving Frequency	1 channel
Time to First FIX	L1 (1575.42 MHz)
Accuracy	100 s approx. (cold start)
Position Update Interval	10 m (GPS), 7 m (MSAS), 3 m (WAAS)
	100 ms or 10 Hz

CHART PLOTTER

Cartography	TZ MAPS, MM3 Vector, CMOR capable (U.S. only)
Memory Capacity	30,000 user points, 100,000 points for ship's tracks, 200 planned routes (500 points per route)

FISH FINDER

Transmit Frequency	CW: 50/200 kHz, CHIRP: 40 to 240 kHz (Low, Medium, High)
Transducer	300 W/600 W or 1 kW* (* Matching box MB1100 required for some transducers)
Range	TrueEcho CHIRP™**, ACCU-FISH™**, Bottom Discrimination**, Auto gain (Fishing/Cruising), A-Scope, Marker Zoom, Bottom Zoom, Bottom Lock
Modes	* CHIRP dedicated transducer required. ** Dual frequency compatible transducer required.
Picture Advance	8 steps: x4, x2, 1/1, 1/2, 1/4, 1/8, 1/16, stop
Fish Finder Alarms	Fish School, Fish School for bottom lock

SIDE-SCAN

Transmit Frequency	CHIRP: 220-240 kHz/445-465 kHz
Transducer	230 kHz: 225T-PR904, 225T-SS904, 225T-TM904 / 455 kHz: 455T-PR903, 455T-SS903, 455T-TM903
Display Range	750 feet to each side
Display Colors	8 high contrast color themes
Display Screen Sizes	Full Screen, 1/2 Screen, 1/4 Screen

INTERFACE

NMEA2000	1 Port NMEA 2000 Edition 3.100 Input: 059392, 059904, 060160, 060416, 060928, 061184, 065240, 065280, 126208, 126464, 126720, 126983, 126985, 126992, 126996, 126998, 127237, 127245, 127250, 127251, 127252, 127257, 127258, 127488, 127489, 127493, 127498, 127503, 127505, 127506, 127508, 128259, 128267, 129025, 129026, 129029, 129033, 129038, 129039, 129040, 129041, 129291, 129538, 129540, 129793, 129794, 129795, 129797, 129798, 129801, 129802, 129808, 129809, 129810, 130306, 130310, 130311, 130312, 130313, 130314, 130316, 130576, 130577, 130578, 130817, 130818, 130820, 130822, 130823, 130826, 130827, 130828, 130845, 130846, 130848, 130880 Output: 059392, 059904, 060928, 061184, 065287, 126208, 126464, 126720, 126984, 126992, 126993, 126996, 126998, 127250, 127251, 127257, 127258, 128259, 128267, 128275, 129025, 129026, 129029, 129033, 129283, 129284, 129285, 130306, 130310, 130312, 130313, 130314, 130316, 130821, 130822, 130823, 130827, 130841
LAN	1 Port (100 BASE-TX)
USB	1 Port for user data import and export
NMEA0183	1 Serial Output Port
SD Card Slot	1 Slot (Micro SDXC)
Transducer Connection	1 Port 10 pin for CHIRP/CW, 1 Port 12 pin for Side-Scan

ENVIRONMENT

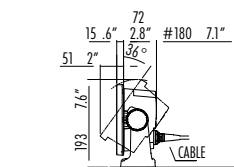
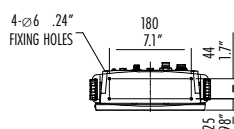
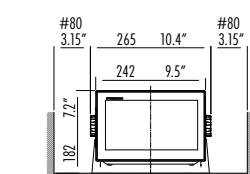
Temperature	-15°C to +55°C
Waterproofing	IPX6

POWER SUPPLY

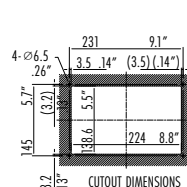
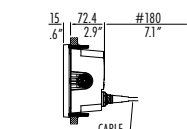
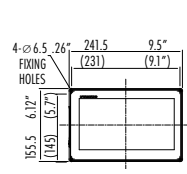
T2T9E: 12-24 VDC, TBD A
T2T13E: 12-24 VDC, TBD A

T2T9E Display Unit – 1.9 kg 4.2 lb (w/o bracket & knobs)

Bracket Mount

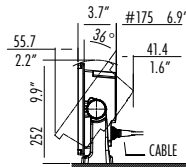
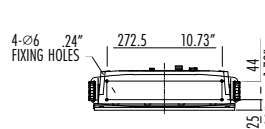
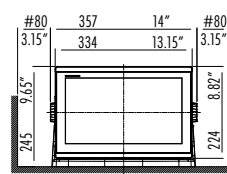


Flush Mount

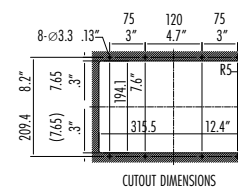
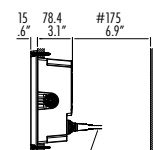
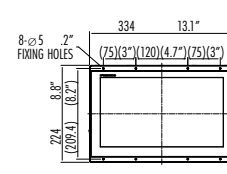


T2T13E Display Unit – 3.2 kg 7.1 lb (w/o bracket & knobs)

Bracket Mount



Flush Mount



SPECIFICATIONS SUBJECT TO CHANGE WITHOUT NOTICE

Catalog No. CA000002753

All brand and product names are registered trademarks, or service marks of their respective holders.

Beware of similar products

FURUNO ELECTRIC CO., LTD.

Japan www.furuno.com
FURUNO U.S.A., INC.
 U.S.A. www.furunousa.com
FURUNO PANAMA S.A.
 Republic of Panama www.furuno.com.pa
FURUNO (UK) LIMITED
 U.K. www.furuno.co.uk
FURUNO NORGE A/S
 Norway www.furuno.no

FURUNO DANMARK A/S

Denmark www.furuno.dk
FURUNO SVERIGE AB
 Sweden www.furuno.se
FURUNO FINLAND OY
 Finland www.furuno.fi
FURUNO POLSKA Sp. z o.o.
 Poland www.furuno.pl
FURUNO DEUTSCHLAND GmbH
 Germany www.furuno.de

FURUNO FRANCE S.A.S.

France www.furuno.fr
FURUNO ESPAÑA S.A.
 Spain www.furuno.es
FURUNO ITALIA S.R.L.
 Italy www.furuno.it
FURUNO HELLAS S.A.
 Greece www.furuno.gr
FURUNO (CYPRUS) LTD
 Cyprus www.furuno.com.cy

FURUNO EURUS LLC

Russian Federation www.furuno.ru
FURUNO SHANGHAI CO., LTD.
 China www.furuno.com/cn
FURUNO CHINA CO., LTD.
 Hong Kong www.furuno.com/cn
FURUNO KOREA CO., LTD
 Korea
FURUNO SINGAPORE
 Singapore www.furuno.sg

PT FURUNO ELECTRIC INDONESIA

Indonesia www.furuno.id
FURUNO ELECTRIC (MALAYSIA) SDN. BHD.
 Malaysia www.furuno.com/my
BEWARE OF SIMILAR PRODUCTS
 All brand and product names are trademarks, registered trademarks, or service marks of their respective holders.
SPECIFICATIONS SUBJECT TO CHANGE WITHOUT NOTICE
 Printed in the USA